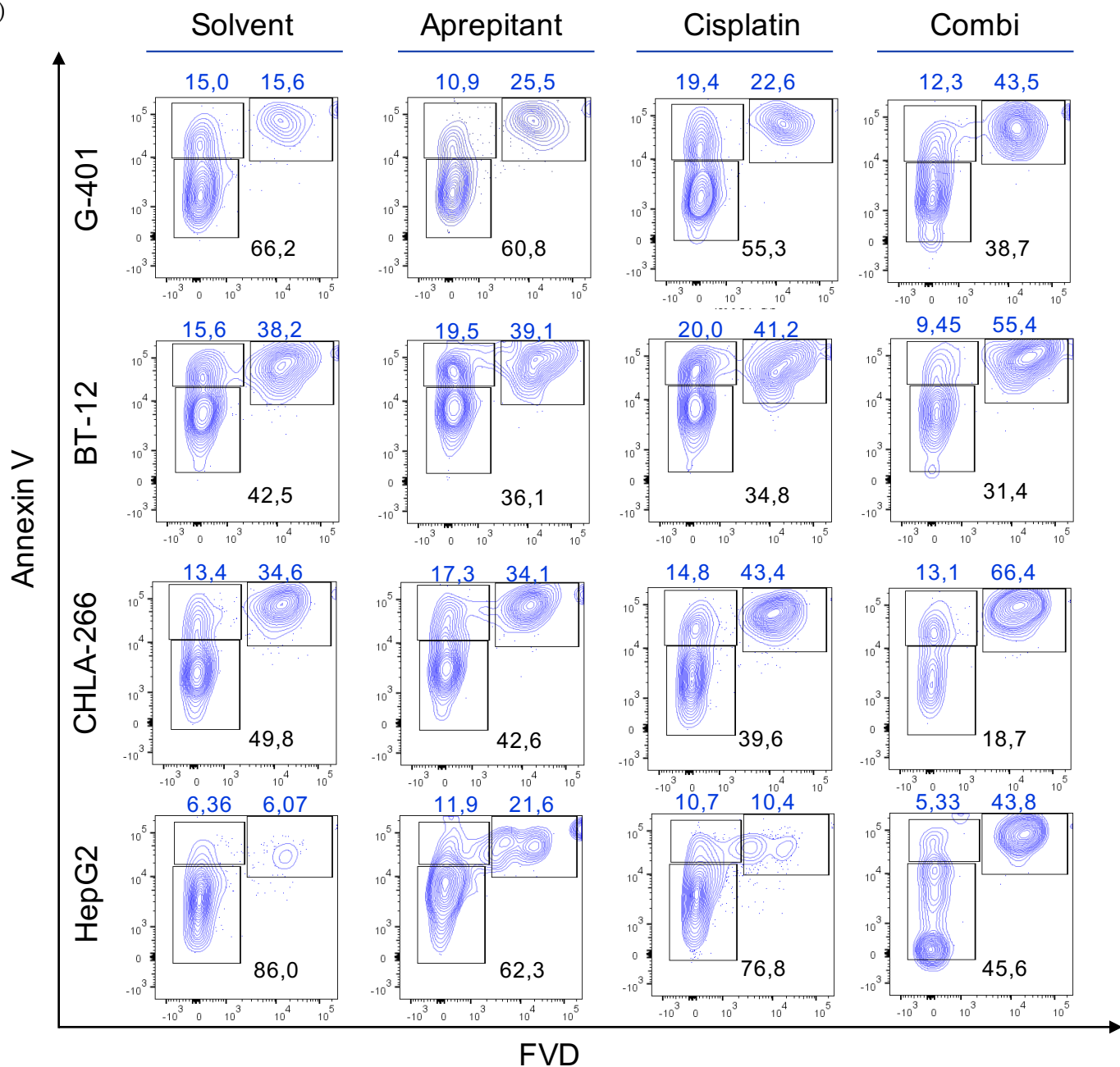


a)



Supplementary Data Figure S1. (a) Determination of apoptotic cell populations of G-401, BT-12, CHLA-266 and HepG2 was performed by staining with annexin V and fixable viability dye (FVD) and assessed through fluorescence-activated cell sorting. Cells were treated with aprepitant (Apre, 15-50 μ M), cisplatin (Cis, 20 μ M) and aprepitant + cisplatin (Combi) for 48h. DMSO was used as treatment control. Shown is the second representative of three experiments. Numbers represents the percentages of the cell populations; black: viable; blue: apoptotic